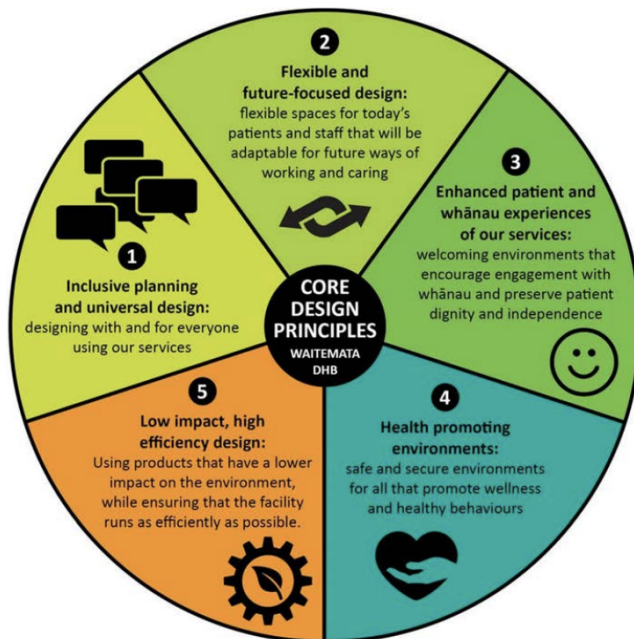


Waitemata 2015 Core Design Principles

<http://www.waitematadhb.govt.nz/assets/Documents/waitemata-2025/WDHBcoreDesignPrinciples.pdf>



- Enhancing the patient and whanau experiences to enable the best care for everyone.
 - As with everything else we do, facilities design is underpinned by Waitemata DHB's core values: everyone matters; with compassion; connected; better, best, brilliant.
1. Design for people who experience this space and facilities on the daily basis- understand their issues created or addressed in the physical design and the environment of the facility. Look after all of the groups- compromising the space.
 2. Will be able to keep up with the change of research/ environment and the possible potential uses of the space.
 3. Enhancing the patient and whanau experience of care is a core priority for Waitemata DHB and this needs to be reflected in the physical environment of our services. In particular, this means providing a welcoming environment in all our services.
 4. Access to natural light, nature themed artwork reduces stress and anxiety. Supporting patients moves and access- wheelchair access. Culturally safe. Material to help sleep and reduce stress. Pro-privacy for staff and patients.
 5. The use of materials that wont dent the environment, raw materials within the manufacturing process. The use of low impact materials and products.